

# MIRASOL PARCEL EIGHT

PART OF GOLF DIGEST P.C.D.  
SECTIONS 4 AND 5, TOWNSHIP 42 SOUTH, RANGE 42 EAST,  
CITY OF PALM BEACH GARDENS,  
PALM BEACH COUNTY, FLORIDA  
SHEET 4 OF 4

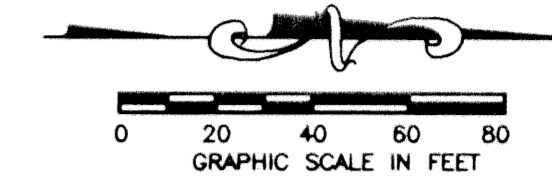
65

STATE OF FLORIDA  
COUNTY OF PALM BEACH

THIS PLAT WAS FILED FOR  
RECORD \_\_\_\_\_  
THIS \_\_\_\_\_ DAY OF \_\_\_\_\_  
AD, 2001 AND DULY RECORDED  
IN PLAT BOOK \_\_\_\_\_ ON PAGES  
\_\_\_\_\_ AND \_\_\_\_\_

DOROTHY H. WILKEN, CLERK  
BY: \_\_\_\_\_, D.C.

CIRCUIT COURT SEAL



### LEGEND

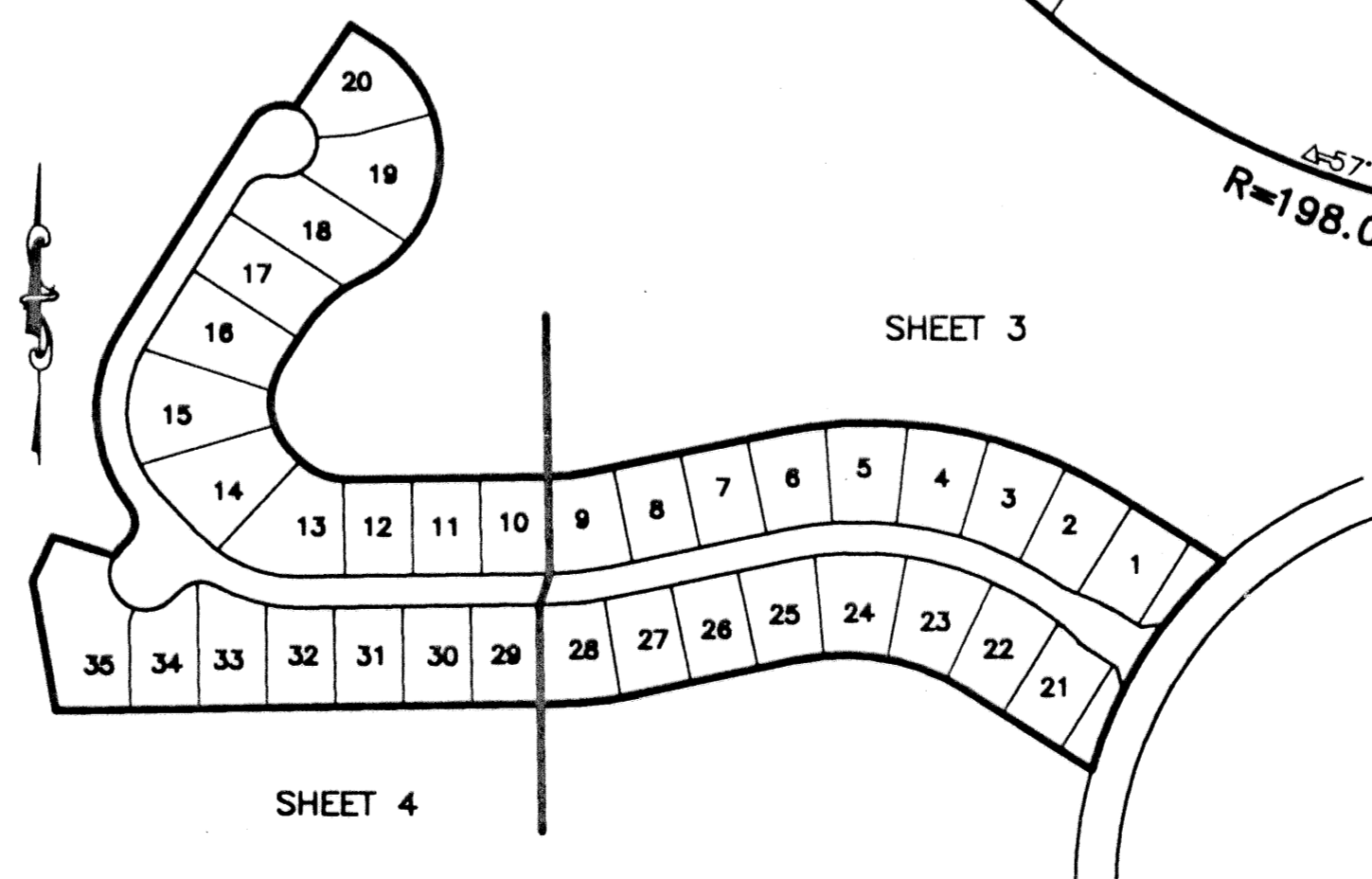
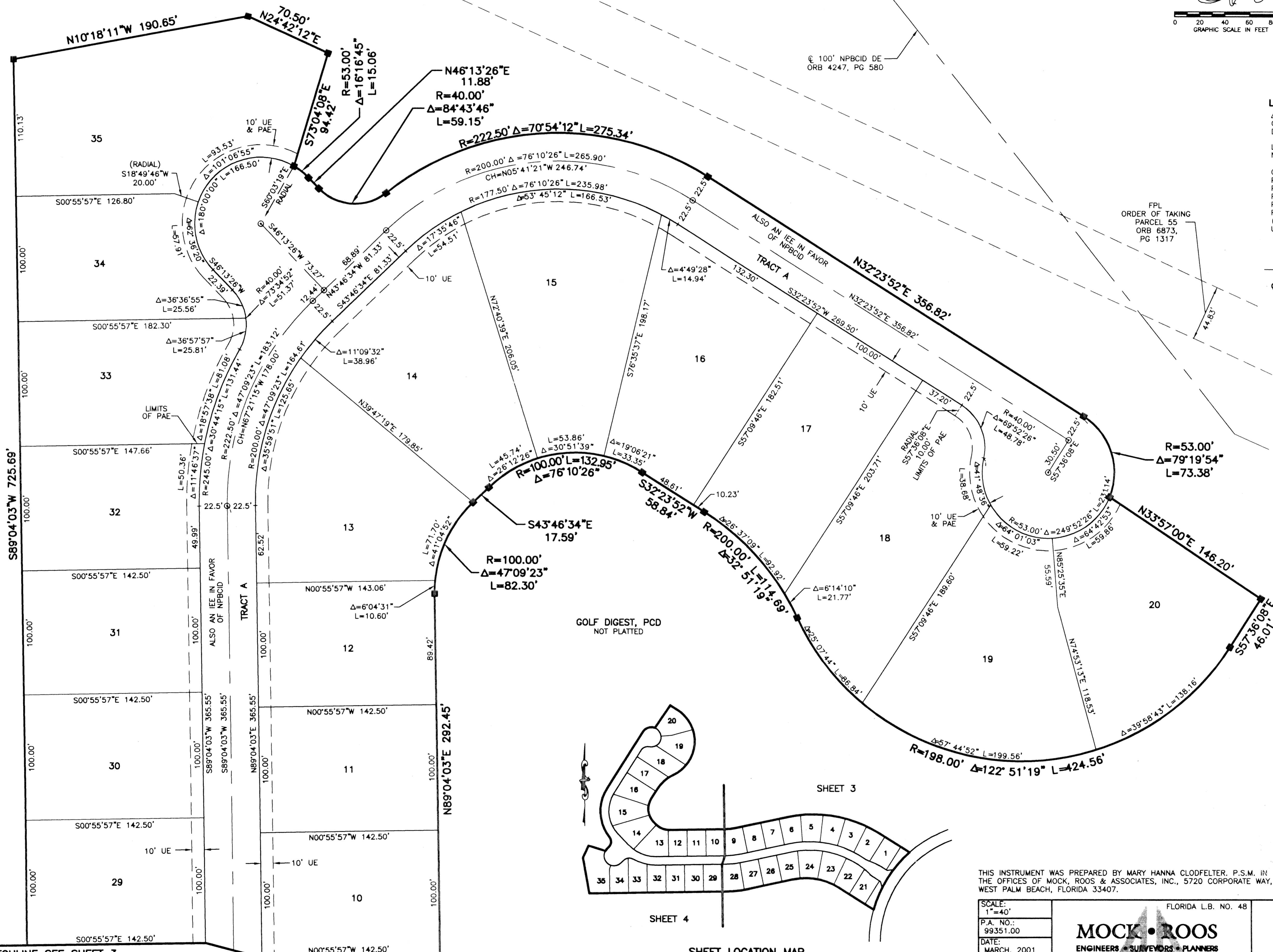
- Δ CENTRAL (DELTA) ANGLE
- CH CHORD
- DE DRAINAGE EASEMENT
- IEE INGRESS-EGRESS EASEMENT
- L ARC LENGTH
- NPBCID NORTHERN PALM BEACH COUNTY IMPROVEMENT DISTRICT OFFICIAL RECORD BOOK
- ORB OFFICIAL RECORD BOOK
- P AE PEDESTRIAN ACCESS EASEMENT
- PB PLAT BOOK
- PG(S) PAGE(S)
- PCD PLANNED COMMUNITY DEVELOPMENT
- R RADIUS
- R (TYP) TYPICAL
- UE UTILITY EASEMENT
- PERMANENT REFERENCE MONUMENT FOUND LB 048 (4"x4" CONCRETE)
- PERMANENT REFERENCE MONUMENT SET LB 048 (4"x4" CONCRETE)
- PERMANENT CONTROL POINT SET LB 048
- ⊙ CENTERLINE

FPL  
ORDER OF TAKING  
PARCEL 55  
ORB 6873,  
PG 1317

GOLF DIGEST, PCD  
NOT PLATTED

⊙ 100' NPBCID DE  
ORB 4247, PG 580

FPL  
ORDER OF TAKING  
PARCEL 55  
ORB 6873,  
PG 1317



S:\proj\101\p08\08.dwg, 05/03/01, 10:16:15 AM, EDT

CAD FILE:  
TAYLPA08\PA08RP03

MATCHLINE SEE SHEET 3

MATCHLINE SEE SHEET 3

SHEET 4

SHEET LOCATION MAP  
(NOT TO SCALE)

THIS INSTRUMENT WAS PREPARED BY MARY HANNA CLODFELTER, P.S.M. IN THE OFFICES OF MOCK, ROOS & ASSOCIATES, INC., 5720 CORPORATE WAY, WEST PALM BEACH, FLORIDA 33407.

SCALE:  
1"=40'  
P.A. NO.:  
99351.00  
DATE:  
MARCH, 2001  
DRAWING NO.:  
42-42-04-79

FLORIDA L.B. NO. 48  
**MOCK • ROOS**  
ENGINEERS • SURVEYORS • PLANNERS  
5720 Corporate Way, West Palm Beach, Florida 33407  
(561) 683-3113, fax 478-7248

MIRASOL PARCEL EIGHT  
PART OF GOLF DIGEST P.C.D.  
SITUATE IN SECTIONS 4 AND 5,  
TOWNSHIP 42 SOUTH, RANGE 42 EAST,  
CITY OF PALM BEACH GARDENS,  
PALM BEACH COUNTY, FLORIDA

SHEET 4 OF 4